



*The Art Trails
of Kilkenny*
ART REGISTRY 2017

Wilpena Terrace Pole by James Schuler

**Hello, I'm
Charles Sturt**



**I was an
Explorer**



Charles Sturt was an explorer
by Giulio Ponte



The Key by Diana Waters

ART REGISTRY

About Gorilla Art 6

POLES

Arkaba Road	7
Aroona Road	9
Downer Street	10
Kupman Street	11
Myponga Terrace	15
Mundulla Street	21
Penola Street	23
Pinda Street	24
Reynell Street	27
Sackville Street	28
Shearer Street	29
Tarcowie Street	30
Wilpena Terrace	32
Yallum Terrace	48
Woodville Park	50

MURALS & PASTE UPS

Aroona Road Honey Eaters	59
Pinda Street	60
McInerney Reserve	63
Tardis	67
Cafe Latino	68
Woodville Park Station	69

FENCE ART

Crochet Flower garden	70
Butterflies	70

OTHER MAPS

Adult Bike Map	71
Kids Bike Map	73
Walking Map	75
Woodville Park	77



BIG GIRLS paste up by Jackie Reichstein



FAST FACTS ABOUT KILKENNY

The area of Kilkenny officially started in 1849 and in 1999 Kilkenny celebrated 150 years. Kilkenny's population is about 1700, however this incorporates homes and people living on the other side of Torrens Road and just behind Arndale Shopping Centre.

POLES

- Number of Stobie Poles located in Kilkenny roughly number around 368.
- Total amount of poles painted is 129, or around 33% of the poles located in the area.
- Fully painted: 129 (double or single poles); Undercoated: 30 (colour or white).
- We have had around 55 people paint designs directly on poles with 50 resident involved on top of that within the consultation or design process.

MURALS

Around 55 people have painted in McInerney Reserve on the back wall.

The length of Pinda St has just been painted by around 15-20 graffiti artists.

An unknown amount of people have constantly painted the inside of Bianco's at Kilkenny over the last 9 to 10 years creating a constantly evolving art space on the derelict building.

Kilkenny Train Station has had a Tardis created on the station platform by three artists.

GARDEN GROUPS

Around 30 people regularly participate in the train station or roundabout gardening/watering programs.

There are a number of pieces in the area that are examples of fan art. There is no profit making element to any fan art created in the area. Gorilla Art respects that individuals are able to create pieces of work based on their heroes or icons. The work that is created is a derivative parody of the icon in order to represent the cultural and social impact of the character as portrayed on society.

Please visit <https://www.plagiarismtoday.com/2010/05/13/the-messy-world-of-fan-art-and-copyright/> to find out more about the legality's and issues surrounding copyright in art.

ABOUT GORILLA ART

A SMALL GROUP OF RESIDENTS STARTED TO PAINT POLES IN 2012. AFTER A LULL, THE GROUP KICKED OFF AGAIN IN THE SUMMER OF 2015 AND HAS BEEN STRIVING SINCE THEN TO MAKE A DIFFERENCE.

Gorilla Art seeks to further develop art, gardens, verge plantings, the train station environment and community spirit within the local area. We seek to empower residents to improve the space they live in while respecting the views of others.

From our initial humble beginnings with input from Hindmarsh Greening, the group has taken seriously the involvement of local residents in everything we do. Painting specifically targets community involvement, seeking to reproduce something that the resident wishes to see outside their door. By directly involving locals in the activity, even if it means tracing on a design for them to fill in, we are able to connect them to community and place. By doing this we seek to bring pride and cultural enhancement to the streets we live on.

In 2017 for the first time, Gorilla Art will be exhibiting the streets of Kilkenny, along with the work of Woodville Park Residents, during SALA, on the Kilkenny Bike Tours. Find out more via our website at www.gorillaart.com.au or via the SALA guide.

In 2016 Gorilla Art was the recipient of the encouragement award for the area in the Charles Sturt Gardening Competition. It is also home to the City of Charles Sturt 2017 Citizen of the Year.



ARKABA ROAD

Total Poles : 12 Total Painted: 6
Artists involved: 5 Resident participation: 0

ARKABA ROAD RUNS HORIZONTALLY BETWEEN AROONA ROAD AND WILPENA TERRACE. IT IS PART OF WHAT WAS ONCE CALLED CARLTON AND FEATURES A NUMBER OF SMALL COTTAGES.

ARTIST June Miller

LOCATION 3 Arkaba Road, Kilkenny

ABOUT 1 pole, 2 images.

This Mondrian pole was created by June Miller in 2015. It is a painting inspired by the work of Piet Mondrian. The original can be seen at : www.piet-mondrian.org
(2015)



ARTIST Matt Lively

LOCATION 8 Arkaba Rd, Kilkenny

ABOUT The pole depicts whimsical butterflies or blowing around the base of a lamp pole, whilst a small cat tries to catch them in the lamplight within it's paws.
When the pole was first created in 2015 the resident also included a solar light that would come on at night which has since had it's battery die. There were also butterflies on the pavement below the pole which were removed when the pavement was upgraded.
(2015)



ARTIST Sue and Simon Johnson

LOCATION 9 Arkaba Road, Kilkenny

ABOUT 1 pole, 2 images.

"Simon & I love to travel and our favourite destination is Thailand. The pattern on the south side of our pole depicts Thai inspired design. Seeing this each time I turn the corner into Arkaba Road it instantly provides me with a feeling of tranquility and calm. The north side has the image of an elephant (*Chang in Thai*). I have a love of these animals that are always calm, gentle and have the most expressive eyes. I love their larger than life stature but have the most gentle nature."

(2015)



AROONA ROAD

Total Poles : 35 Total Painted: 2
Artists involved: 1 Resident participation: 2

THIS ROAD WAS ONCE A THOROUGHFARE BETWEEN PORT ROAD AND TORRENS RUNNING ACROSS THE RAILWAY-LINE AND BEHIND BIANCO'S. THERE IS CURRENTLY AN INTEREST IN HOLDING A WORKING BEE TO DECORATE AROONA ROAD.

ARTIST Tracey Davis
LOCATION 38 Aroona Road, Kilkenny
ABOUT 1 pole, 2 images.
Painted for Glenda Lee, this pole represents the Engel's Nursery that was located in the area. Peter Engel lived in the home now occupied by Glenda for a number of years with his nursery operating just out the back.
The leafy vine pole is a green representation of the nursery as well as the vine that hangs on Glenda's fence.
(2016/2017)



DOWNER STREET

Total Poles: 35 Total Painted: 4

Artists involved: 1 Resident participation: 2

DOWNER STREET WAS NAMED AFTER CHARLES DOWNER A GREAT GREAT UNCLE OF ALEXANDER DOWNER WHO ONCE LIVED IN A GRAND HOUSE AT 367 TORRENS ROAD CALLED ALTON. HIS PROPERTY WOULD HAVE ONCE RUN BETWEEN TORRENS ROAD AND DOWNER STREET.

ARTIST Tracey Davis
LOCATION Corner of Wilpena Tce & Downer St, Kilkenny
ABOUT The second pole by Tracey Davis this pole was created to depict the peace and calm of nature. It was based on the semi commercial vegetable garden in the front yard of the home adjacent to this pole.
(2015)



ARTIST Tracey Davis
LOCATION 26 Downer Street, Kilkenny
ABOUT The Phantom was painted for Pete Partridge for his daughter's 16 birthday in Dec of 2015. Pete is a Phantom fan who has a lot of phantom memorabilia, which has been collecting for years. To reproduce this image Tracey used older style phantom covers as the basis for the illustrations.
(Dec 2015)



ARTIST Candice Papagiannis
 LOCATION 11A Downer Street, Kilkenny
 ABOUT Candice is a new resident in Kilkenny who happens to be a graphic designer. She has been running a range of creative workshops in 2017 at the Kilkenny Community Centre. We look forward to seeing what Candice comes up with on this pole.



ARTIST Tracey Davis
 LOCATION 11 Downer Street, Kilkenny
 ABOUT Sunflowers, Van Gogh Style, painted in Dec of 2016.
 When first asked local resident Barbara stated that she wanted sunflowers on the pole outside of her home, this was in the summer of 2015/2016. While it took a whole year for Tracey to come back and complete a design Barbara was wrapped with the result and happy to finally show her grandchildren at Christmas that the pole had been finished.
 (Dec 2016)



ARTIST Lisa & Rene Horsell
 LOCATION 10 Downer Street, Kilkenny
 ABOUT 1 pole, 2 images.
 This delightful pole depicts two images, one on each side. The intricate mosaic piece is based on a Moroccan design.
 While the floral repeat pattern is based on the girls Polish heritage as well as patterns that she saw in her grandmothers house as a child.
 (2017)



KUPMAN STREET

Total Poles: 14

Total Painted: 5

Artists involved: 4

Resident participation: 6

LOCAL COUPLE EMILY AND LEONARDO DECIDED TO START PAINTING THEIR STREET IN THE SUMMER OF 2016. WHILE ONLY HALF THE STREET SO FAR HAS BEEN PAINTED THE WORK IS OFTEN REFERRED TO BY OTHERS AS BEING STUNNING AND STYLISH.

ARTIST Emily Mantilla-Downes

LOCATION 23 Kupman Street, Kilkenny

ABOUT Arch Angel Pole

A gorgeous fluffy angel pole with soft clouds, pastel colours and an angel to look after all of us sits at the start of Kupman Street.
(2016)



ARTIST Leonardo Mantilla

LOCATION 24 - 26 Kupman Street, Kilkenny

ABOUT 1 pole, 2 images.

1st Antique hipster lady

2nd Boy with a heart

Meet the stylish lady of Kupman Street and a boy hugging a heart falling from a plane on a parachute by Leonardo Mantilla.

(2016)



ARTIST Tracey Davis & Bill
 LOCATION 19 - 21 Kupman Street, Kilkenny
 ABOUT 1 pole, 2 images.
 1st A Greek Island (*Santatorini*)
 2nd The old Kilkenny Garage
 Tracey painted a scene in Santatorini for the local Greek resident living at no 19.
 While Bill created an image of an old style garage and Holden in Kilkenny. It is complete with a flag and petrol pump.
 (2016)



ARTIST Leonardo Mantilla
 LOCATION 20 Kupman Street, Kilkenny
 ABOUT Fruit and Veg
 Created for the family living near this pole, the resident wanted a fruit and veg pole theme to reflect the local ethnic heritage of the area where in the past and even to this day, residents grow their own backyard fruit and vegetables. The pole also represents the community spirit of giving and sharing.
 (2016)



ARTIST Leonardo Mantilla
 LOCATION 9 Kupman Street, Kilkenny
 ABOUT Ukrainian National Crest
 This piece was created using a data projector by Leonardo for local resident George Fedyk. It is a proud representation of George's heritage.
 (2016)



MYPONGA TERRACE

Total Poles: 24 Total Painted: ALL
 Artists involved: 15 Resident participation: 6

OVER 2 PAINTING SESSIONS IN DIFFERENT YEARS MYPONGA TERRACE EAST HAS BEEN FULLY DECORATED BY THE LOCAL FAMILIES, CHILDREN, GUEST ARTISTS AND FRIENDS. LOCAL ARTISTS GABBY DANIELLE AND GABRIELLE DE LORETO HAVE CREATED STUNNING FEATURE POLES FOR THE STREET. MYPONGA IS ALSO A COUNTRY TOWN LOCATED SOUTH OF ADELAIDE.

ARTIST Gabrielle De Loreto
 LOCATION Corner of Myponga & Wilpena Terraces.
 ABOUT Gabrielle has depicted both Pharaoh and Anubis; guardian and protector of the dead. "God of the Underworld"
 For more on the gods depicted visit
<https://en.wikipedia.org/wiki/Anubis>
<https://en.wikipedia.org/wiki/Pharaoh>
 (2017)



ARTIST Gabby Danielle
 LOCATION 26 Myponga Terrace, Kilkenny
 ABOUT Inspired by the hyper-real works of late Australian artist Howard Arkley, this pole is a celebration of Australian suburbia featuring linear and organic elements and exaggerated colour. Eagle-eyed observers will notice that the houses on each side are based on the dwellings directly behind them.
 To find out more about Howard Arkley visit <http://arkleyworks.com>
 (2016)



ARTIST Gabby Danielle
 LOCATION 24 Myponga Terrace, Kilkenny
 ABOUT Gabby painted this pole for her neighbours David and Cora. One side features a collection of graphic dahlias for their little grand-daughter Mila who loves flowers. They have been complemented with some cute butterflies.
 As requested by the next neighbour George, the other side of this pole features some 'peace poppies' finished off with a peace sign.
 (2016)



ARTIST Gabby Danielle
 LOCATION 19 Myponga Terrace, Kilkenny
 ABOUT An abstract design based on organic geometry and using various colour combinations from the colour spectrum.
 (2017)



ARTIST George Duras
 LOCATION 17 Myponga Terrace, Kilkenny
 ABOUT A pole painted using masking tape to create colour and shapes.
 (2017)



ARTIST Gabby Danielle

LOCATION 20 Myponga Terrace, Kilkenny

ABOUT A work in progress for the residents at this address. One side will feature butterflies and the other will feature dragonflies. They will then be patterned with various intricate designs and bright colours.
(2017)



ARTIST Diana Waters & Lee Polen

LOCATION 11A Myponga Terrace, Kilkenny

ABOUT 1 pole, 2 images.
1. Starfish and scollop's.
2. Sea Creatures with Frangipani
Resident Lee has painted some cute sea characters underwater while frangipani dances at the top of the pole.
'The seaside theme of this pole painting is a response to the yellow background which was already present. As yellow suggested sand and sunshine, a sea-star, scallop shell and sea-grass were clear choices for illustrative elements.'
(2017)



ARTIST Finley & Coen Howland

LOCATION 16 Myponga Terrace, Kilkenny

ABOUT A volcanic eruption on one side is reflected by a peaceful happy scene under a tree on the other.
Finley said he "wanted to make it look cool"... perhaps, this is a collaborative piece with artistic choices based purely on aesthetics.
Finley & Cohen were 5 and 7 at the time and had help from an adult neighbour.
(2016)



ARTIST

Kieron Howland

LOCATION

10 Myponga Terrace, Kilkenny

ABOUT

'Old Man Tom' was born in this house in the 1910's built by his father. He lived his entire life here, into his 90's. He was affectionately known about the suburb and often found working in his garden or walking to and from Arndale.

For a person who saw so much change in Kilkenny throughout the 90 plus years living in this house, it seemed fitting to have him represented in this further transform of his suburb.

(2016)



ARTIST

Paul

LOCATION

7 Myponga Terrace, Kilkenny

ABOUT

A moon and stars are depicted on a night sky on Myponga Tce. The work was created with brush and aerosol cans.

The Moon and stars were created by Paul in honour of their pets 'Stella' and 'Luna'.

(2017)



ARTIST

Kelly & Indigo

LOCATION

3A Myponga Terrace, Kilkenny

ABOUT

1 pole, 2 images.

Anyone for liquorice all-sorts? A fun happy pole that reflects everyone's favourite liquorice. *(By Kelly)*

The other-side is a tape geometric shape pole created in 3 colours. *(By Indigo)*

(2017)



ARTIST Tracey Davis
 LOCATION 6 Myponga Terrace, Kilkenny
 ABOUT Waves of the ocean are depicted in sea watery greens, purples, aquas and blues. (2017)



ARTIST Indigo
 LOCATION 1 Myponga Terrace, Kilkenny
 ABOUT 1 pole, 2 images.
 Carrots for the bunny that lived at the house where this pole is located is painted on one side of this pole.
 On the reverse is a lovely depiction of daffodils reaching up for the sun.
 (2016&2017)



ARTIST Unknown family & Sharon Hefferan
 LOCATION 3 Myponga Terrace, Kilkenny
 ABOUT 1 pole, 2 images.
 1st side is a hand print pole displaying all the hands of the entire family in palm prints.
 2nd side is a diagonal triangular pole by Sharon Hefferan.
 (2016&2017)



ARTIST

Indigo & Kelly

LOCATION

2A Myponga Terrace, Kilkenny

ABOUT

1 pole, 2 images.

Sunny stars or flowers sway in the breeze on one of these poles with a mosaic square tile on the back.

(2016&2017)



MUNDULLA STREET

Total Poles: 14 Total Painted: 3

Artists involved: 1 Resident participation: 2

MUNDULLA IS A COUNTRY TOWN LOCATED NEAR BORDERTOWN,
AS YOU HEAD TO THE SOUTH EAST OF SOUTH AUSTRALIA.

ARTIST June Miller
LOCATION 25 Mundulla Street, Kilkenny
ABOUT June has depicted a range of flags to represent a range of nationalities living without the area of Kilkenny.
Junes inclusive pole for residents.
Aboriginal flag, United Kingdom, Germany, Italy, Vietnam, India, Greece. On the other side going down, Australia, Colombia, Ukraine, Ethiopia, Brazil, Chile, Canada & Kenya on one side.
(2015)



ARTIST June Miller
LOCATION 23 Mundulla Street, Kilkenny
ABOUT The State emblems are a feature of this next pole by June Miller. It features the hairy nosed wombat, a sturt pea, pipping shrike, leafy sea dragon and opal gems.
For more information visit www.australias.guide/sa/flags-emblems/
(2015)



ARTIST

June Miller

LOCATION

17-19 Mundulla Street, Kilkenny.

ABOUT

The wall and dark side of the moon by Pink Floyd are featured on each side of this pole. June's reasoning for its existence is clear ... because it is Pink Floyd.

For more information on the albums visit

https://en.wikipedia.org/wiki/Pink_Floyd_-_The_Wall

https://en.wikipedia.org/wiki/The_Dark_Side_of_the_Moon

Moon

(2015)



PENOLA STREET

Total Poles: 12

Total Painted: 1

Artists involved: 2

Resident participation: 5

PENOLA IS A COUNTRY TOWN LOCATED SOUTH EAST OF ADELAIDE.

ARTIST	Fiona Futo & family
LOCATION	11 Penola Street, Kilkenny.
ABOUT	Japanese lanterns are displayed in vibrant colours on this pole. Simon Futo and Fiona met in Japan and their girls now study Japanese at the school of languages on Torrens Road. The families names are written on the lanterns in katakan (Japanese characters). It was a team effort but Simon's mum, Pat Sharples, was the chief artist. The pole was painted over the summer of 2017.



PINDA STREET

Total Poles: 13

Total Painted: 8

Artists involved: 6

Resident participation: 10

PINDA STREET HAS BEEN SLOWLY DECAYING OVER THE YEARS. THE OLD BIANCO'S SITE IS CURRENTLY USED BY GRAFFITI ARTISTS. RECENTLY A GROUP OF ARTISTS HAVE PLACED COLOURFUL GRAFFITI ART ON THE OUTSIDE OF BIANCO'S AND GORILLA ART HAVE BEEN PAINTING THE STREETS POLES. PEOPLE OF ALL AGES ARE SPOTTED IN THE STREET TAKING PHOTOS OF THE ART.

ARTIST Amy, Dylan and April Foote

LOCATION Pinda Street, Kilkenny.

ABOUT Black Bugs

Amy and family have used posca pens to fill in this pole with a range of bug life. Amy has also popped her house number at the top of the pole.

(2017)



ARTIST Diana Waters

LOCATION Pinda Street, Kilkenny.

ABOUT The beautiful illustrations were created by Illustrator Diana Waters in 2017.

'Nostalgia and local history are the theme of this artwork. Most of the houses in the adjacent streets date from the turn of the nineteenth century, so the black and white scheme evokes that time before colour photography, while the cast-iron key and fob-watch represent typical personal possessions of that time.'

(2017)



ARTIST Giulio Ponte &
 LOCATION Pinda Street, Kilkenny
 ABOUT My shadow cyclist just represents the fact that again cyclists use the road and it is a clear reminder to motorists that cyclists are around, and I wanted to play around with stencils that I made.

The "Go Green" geometric illusions, was meant to be of the theme "Fifty shades of Green" I love geometric illusions, the longer you stare the different it looks, cubes, diamonds, three d, staircase, and if you shine a UV black light on it at night, it looks awesome (I mixed some fluorescent paints into the green, so that UV black light would make it look cool at night)

The Green Hulk riding the bike was again highlighting going green (my Hulk figurine on a bike Sarah gave me), and the "one more bike, one less car was something I've been wanting to paste-up for ages as going green implying being environmentally friendly. (2017)



ARTIST Giulio Ponte &
 LOCATION Pinda Street, Kilkenny.
 ABOUT OK, so the my pole with "WAY" written in green is hopefully a clever play on words and colours... representing the "green way", I am not sure if everyone will get it, obviously the bike represents cycling on the green way, and my little green BUG, is an abbreviation for the westsideBUG with the heart in the circle being a play on the love the west side symbol CCS use

Hello, I'm Charles Sturt, and I was an explorer is obviously a play on the CCS's iconic phrase <http://charlessturt.sa.gov.au/Hello>, intended to be a reminder to residents, that Charles Sturt was an explorer not just the name of an LGA. Again I wanted to play with stencils, but his face is coloured with a fat sharpie text.

(2017)



ARTIST Tracey Davis
 LOCATION Pinda Street, Kilkenny.
 ABOUT The zebra pole created for the Zebra Tree Service. We have a traditional black and white Zebra on one side, with a colourful zebra on the back.

(2017)



ARTIST

Tracey Davis

LOCATION

Pinda Street, Kilkenny.

ABOUT

These animal inspired poles were created to cheer up Pinda Street, a place has often been described as dismal, bleak and sad looking with rubbish or burnt out cars left in the space.

The theme of animal patterns occurred due to the request from Zebra Tree Service. This pole is a tiger and a leopard pattern.

(2017)



ARTIST

Tracey Davis

LOCATION

Pinda Street, Kilkenny.

ABOUT

Another duo in my animal print range, this time a colourful background has a white zebra stripe over the top.

The front side has a brownish coat with tiger or cat stripes on top.

This pole will be eventually re-painted to depict dogs from the park by Kelly Dann.

(2017)



REYNELL STREET

Total Poles: 23 Total Painted: 2

Artists involved: 3 Resident participation: 0

RUNS BETWEEN ROSETTA STREET AND DAVID TERRACE.

ARTIST Tracey Davis
LOCATION 46 Reynell Street, Kilkenny
ABOUT Stripes
A pastel combination of stripes of colour.
(2016)



ARTIST Peter & Joanne Tomakos
LOCATION (Across from 31) Reynell Street, Kilkenny
ABOUT 1 pole, 2 images.
Gorilla art provided some lettering stencils for Peter and Joanne to create a Shearer Street pole.
As the couple have a gorgeous productive fruit and vegetable garden they decided to include cherry blossoms on the pole.
The second side depicts Mt Fuji and a spray of cherry blossoms.
(2016)



ARTIST Tracey Davis & Diana Waters
 LOCATION 50 Reynell Street, Kilkenny
 ABOUT Red Riding Hood 1st side (Tracey)
 Wolf dressed as Grandma (Diana)
 'Diana Waters' work shows Wolf in Grandma's clothes making a lunge for LRRH, who's fleeing via the door. Tracey's Red Riding Hood has been influenced by the work of Jackie Reichstein.' It reflect Tracey's painterly style that seeks to incorporate a variety of colours used in the painting throughout the image in it's painterly finish.
 (2017)



ARTIST Tracey Davis & Diana Waters
 LOCATION 50 Reynell Street, Kilkenny
 ABOUT Wolf chasing Red Riding Hood (Diana)
 Grandma (Tracey)
 Diana Waters' work shows the Big Bad Wolf with tongue lolling as he gazes after LRRH on the path to Grandma's house. The imagery is flat, stylised, and simplified in order to allow the viewer who's passing in a vehicle, to grasp the content and meaning in an instant, or at least register the balance of abstract forms and colours as a pleasing effect.
 (2017)



SACKVILLE STREET

Total Poles: TBC Total Painted: 2

Artists involved: 1 Resident participation: 0

SACKVILLE STREET IS IN WEST CROYDON. IT ONCE RAN ALONG SIDE OF THE YMCA THAT WAS LOCATED IN THE STREET, IT NOW RUNS ALONG THE EDGE OF J.M. MCINERNEY RESERVE.

ARTIST June Miller
LOCATION 2 Sackville Street, Kilkenny
ABOUT Balloons on a white or black background are shown on the pole. The balloons are cheerful and fun.
(2016)



ARTIST June Miller
LOCATION 12 Sackville Street, Kilkenny
ABOUT 1 pole, 2 images.
1st side is a diagonal design with a range of colours
2nd side shows a natural scene as a dark silhouette on a blue background.
June has represented a natural peaceful scene in the park on one side of the pole with a range of colours on the other.
(2016)



SHEARER STREET

Total Poles: 10 Total Painted: 2
 Artists involved: 1 Resident participation: 7

SHEARER STREET WAS NAMED AFTER JOHN SHEARER'S FAMILY. THEIR LARGE HOUSES ONCE RAN FROM WILPENA TERRACE TO SHEARER STREET BEFORE THEY WERE SUBDIVIDED.

ARTIST Tracey Davis
 LOCATION 7 Shearer Street, Kilkenny
 ABOUT The Stama family requested a pole that included different visual aspects for the entire family.
 There was their pet dog Solomon for one son, both the Greek and Italian flags for the other son, a sunflower for Leda and an olive branch for her husband.
 It was a squeeze getting the entire lot on a single sided pole but I was happy with the result.
 (2016)



ARTIST Tracey Davis
 LOCATION 8 Shearer Street, Kilkenny
 ABOUT Aladdin Sane was a further development of David Bowie's character Ziggy Stardust for his sixth album Aladdin Sane. It depicts Ziggy going to America. The close up was painted for Katrina George in Shearer Street by Tracey Davis in the summer of 2016. The pole was painted to express her love for the dearly departed David Bowie. The inspiration for it came from the mural used as a memorial at the time of Bowie's death which was painted by Adelaide artist Jimmy C in Brixton London in 2013.
 Katrina was so inspired that she wanted to have Bowie outside her home. I do think she probably cried when he died.
 (2016)



TARCOWIE STREET

Total Poles: 18 Total Painted: 2

Artists involved: 2 Resident participation: 8

FEATURED THE ST EDWARDS CHURCH AND HALL WHICH WAS ONCE THE HOME OF THE KILKENNY ESTEDFORDS BETWEEN 1928 AND 1949. TARCOWIE IS ALSO A COUNTRY TOWN LOCATED BETWEEN PORT PIRIE AND PETERBOROUGH.

ARTIST Jane Baird
LOCATION 17 Tarcowie Street, Kilkenny
ABOUT Unknown
(2015)



ARTIST Jane Baird
Two poles, same design
LOCATION Cnr Tarcowie St & David Tce, Kilkenny
Cnr Tarcowie St & Aroona Rd, Kilkenny
ABOUT An indigenous inspired pole by Jane Baird who worked with a local aboriginal family that lives on Aroona Road. These matching signs are beacons that easily identify both the entrance and exit of Tarcowie Street in David Tce and Aroona Road.
(2015)



ARTIST

Sue Johnson

LOCATION

17 Tarcowie Street, Kilkenny

ABOUT

The dandelion is shown here as a blossom that blows away with the seeds flying to the four winds all over the place.

These blossoms depict Sue's children who leave their home to work all over Australia, only to return in-between jobs or travel.

Their return is like the rebirth of the plant that occurs when the seed flying around in this picture is sown and the plant returns the following season.

(2015)



WILPENA TERRACE

Total Poles: 49 Total Painted: 43
 Artists involved: 20 Resident participation: 15

WILPENA IS AN ABORIGINAL KAURNA WORD AND MEANS: "THE HUT OR WURLI PLACE." THIS STREET ENCOMPASSES THE OLDER INDUSTRIAL AREA WHICH WAS ONCE KNOWN AS CARLTON and THE GRAND HOMES OF THE SHEARER FAMILY IN ALTON. BOTH CARLTON AND ALTON WERE SUB-SUBURBS OF KILKENNY.

ARTIST Tracey Davis
 LOCATION 90 Wilpena Tce, Kilkenny
 ABOUT This was the first pole by Tracey Davis on Wilpena Terrace. It took months and had AT LEAST 2-3 re-designs.
 The font is a free hand design with some cheery orange flags at the top. It can be hard to let go with a pole design, particularly when you first start painting. At some stage you have to go it is good enough.
 (2015)



ARTIST Tracey Davis
 LOCATION 91 Wilpena Tce Kilkenny
 ABOUT H.D. Coles store pole
 The building that was once Bursons Auto Parts was Motor Traders from 1964 to 2011. Prior to that it was a mixed business called H.D. Cole from 1928-1956. The building was built by H.D. Cole and was stood empty between 1956 and 1964.
 This pole by Tracey was constructed to reflect the history of the building it is adjacent to. It details Oxo cubs and an egg as items that were bought in the general store when it was open. Cole's stocked everything from brooms to vegetables. People have told current staff about how they once used a ration book at Coles during WWII. (2015)



ARTIST

Tracey Davis

LOCATION

86 Wilpena Tce Kilkenny

ABOUT

1 pole, 2 images.

Side 1: Budgie and Sunflower

Side 2: Bee and sunflower

The residents requested a big sunflower with each of them having a different animal painted on top of the flower.

The bee was turned into a native Australian Bee with a traditional blue bottom.

(2016)



ARTIST

June Miller

LOCATION

87 Wilpena Tce Kilkenny

ABOUT

Flags of local residents are detailed on this pole. June has painted 2 of these poles in the area to express the diversity of those living within Kilkenny. It includes ancestry of second generation (etc) Australians living around the stobie pole. It was requested by Saj at 87 Wilpena Tce.

Countries on this pole include, Greece, Italy, England, Australia, France, Chile, Dutch, India, Poland, Germany and the Ukraine.

(2016)



ARTIST

Tracey Davis

LOCATION

84 Wilpena Tce Kilkenny

ABOUT

Diagonal shapes

Abstract, Russian constructivism

influenced this pole which was created as a temporary design. Local resident Nelson Manonella will be putting up a Shearer history pole on this corner in the future.

For information on Russian constructivism visit: <http://www.theartstory.org/movement-constructivism.htm>

(2016)



ARTIST Tracey Davis
 LOCATION 84 Wilpena Tce
 ABOUT Diagonal shapes
 This pole was a temporary design while it waited for Nelson Manonella to replace it with a historic pole dedicated to the Shearer family.
 (2016)



ARTIST Tracey Davis
 LOCATION 81 Wilpena Tce Kilkenny
 ABOUT 1 pole, 2 images.
 1st resident's dog Matilda
 2nd resident's cat Jasper
 I painted my neighbours pets on their front pole to celebrate their love for their fur babies. Leanne was in love with the work created for her, even though it took a while to be finished.
 (2016)



ARTIST Nelson Manonella & Annette Tripodi
 LOCATION Second side, Tracey Davis
 ABOUT 77 Wilpena Tce Kilkenny
 1 pole, 2 images.
 1st side Escher Birds pole
 2nd side Camel
 Nelson and Annette painted the Escher repeat pattern in 2012.
 The camel was based on a picture left at 79 Wilpena Terrace by the previous family, it was of a camel the Gepp family owned in Oodnadatta. The Gepp family ran a camel train in and out of the area prior to retiring in Kilkenny in 1922.
 (2012&2017)



ARTIST Nelson Manonella and Annette Tripodi
 LOCATION 73 Wilpena Tce
 ABOUT Henna pattern pole, soft browns on an apricot background.
 This pole was created by Nelson and Annette in 2012, it was painstakingly traced from a Henna pattern using a data projector. To me this design reflects the multicultural embrace that both Nelson (from Chile) and Annette (of Italian heritage) have for the music and art of the world.
 (2012)



ARTIST Tracey Davis
 LOCATION 80 Wilpena Tce Kilkenny
 ABOUT 1st Shearer lettering pole
 All four of the houses between 78 and 84 were built by John Shearer prior to 1920. John ran his business Shearers Farm Equipment across the railway line in Kilkenny. This pole is a reflection on their contribution to the area.
 Most of the Shearer houses on this block were sold by 1945 when the last Shearer moved out of the district.
 (2015)



ARTIST Tracey Davis
 LOCATION 80 Wilpena Tce, Kilkenny
 ABOUT Arthur Cecil Gask, lived in the residence at 80 Wilpena Terrace, Kilkenny between 1922 and 1926. He was an author and dentist who wrote 34 books. This pole is dedicated to his work. We believe his daughter married one of John Shearer's sons.
 (2015)



ARTIST Brenton Culshaw

LOCATION 78 Wilpena Tce, Kilkenny

ABOUT Beatles pole with Beatles heads on one side. The decorative pole was created by Brenton Culshaw in order to explore the rumour that the Beatles attended a party here while on tour in 1963. The truth is that their manager Brian Epstein attended the party hosted by the Auger family. While there he signed the Beatles 4 names on a wall at the back of the house which was destroyed when the current family pulled the old pool out in the 1980s. The Beatles were unable to get out of their hotel room while on tour due to being surrounded by fans. (2015)



ARTIST Tracey Davis & Elsje Cornish & her granddaughter Charlotte

LOCATION 74 Wilpena Tce Kilkenny

ABOUT 1 pole, 2 images.
1st side A Kite
2nd side Rainbow cake
The Kite was created by Elsha & Charlotte on a cold winders day.
From 1932 -1967 Teagle Cake Manufacturer ran his business SA Cake Company in the rear factory at no 67. The cake with a strawberry on top is a contemporary symbol of cake to depict the SA Cake Factory. (2016&2017)



ARTIST Tracey Davis

LOCATION 67 Wilpena Terrace, Kilkenny

ABOUT 1 pole, 2 images.
1st Fish pole for resident
2nd Tennis court collage for resident
The Tennis pole is a pictorialisation of the history of the home at no 67 which once had a tennis court on the block at 65. While the fish was painted in Port Adelaide colours for the resident at 67 who loves to go fishing. These pictures are part of an avenue of sport that includes football and soccer. (2016)



ARTIST Tracey Davis
 LOCATION 70 Wilpena Tce, Kilkenny
 ABOUT Rusty the Horse for the Messenger Family. The Messenger family still have a milk run in the local area. Out the back of **no 70** are stables, and old covered well. The family block runs left behind no 70 to Reynell Street. The horses used by the Messengers lived in the stables behind. Rusty the horse was the last milk horse in the area he was retired from active service of milk delivery in 1982. He was a local icon who lived happily on this block until 2004 when passed away aged 37. Prior to that the milky had still delivered milk to the area with a horse and cart. (2016)



ARTIST Tracey Davis
 LOCATION 63 Wilpena Tce Kilkenny
 ABOUT 1st side, Rainbow coloured lorikeet, 2nd side, History Port Adelaide Pole
 The parrot pole is a response to the resident's request for a parrot with lots of colour.
 The history football pole has been a bit controversial as some residents did not wish to have football colours included in the area. It seeks to represent the historical start of the Port Adelaide Football Club in 1870. To date it is the only official Port pole in the area, all other football requests have been interpreted through colour or animals. (2016)



ARTIST Tracey Davis
 LOCATION 66 Wilpena Tce Kilkenny
 ABOUT Milk bottle pole, celebrating the Messenger family. The Messengers still run a milk run in the area, with Stuart Messenger who lives at 37 Yallum Street, Kilkenny. Stuarts uncle owned the house at 70 Wilpena Terrace, Kilkenny. Stuarts cousin currently lives there. The house contains a barn and old well in its backyard. The barn was once used by Rusty the horse, which pulled a milk cart for Stuarts Dad. The Messengers once had a dairy where Arndale now stands. (2016)



ARTIST Tracey Davis
 LOCATION 57 Wilpena Tce Kilkenny
 ABOUT Soccer Pole
 Created due to resident request for the Girolamo, as they played soccer a lot as kids. I decided to paint a close up image of a soccer ball, with a sneaker. In the background is a white soccer net and the blue wiggly lines are meant to indicate movement between the ball and the net. The picture is part of a group of sport and recreation poles.
 (2016)



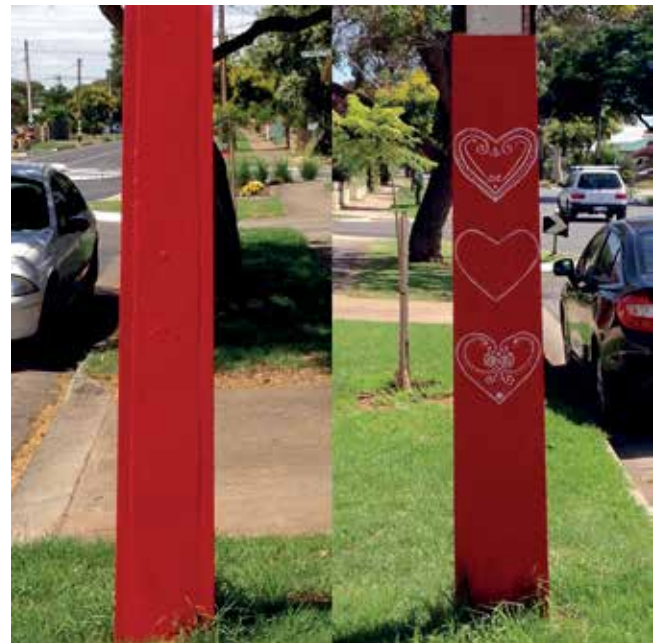
ARTIST Tracey Davis
 LOCATION 64 Wilpena Tce Kilkenny
 ABOUT Blackboard Pole
 Is a blackboard surface that has proven to be a bit rough, so in a way it was an experiment that hasn't really contributed much. It will probably be altered in the future.
 (2016)



ARTIST Gabrielle De Loreto
 LOCATION 60 Wilpena Tce Kilkenny
 ABOUT Siva Outdoor Theatre history pole
 This pole is a direct reflection on Alfred Hitchcock, who is shown standing in silhouette before a big moon on one side of the pole. The other side shows a roll of film and old style graphics for picture cinemas. The Siva Theatre was an outside theatre that existed for 6-9 months in 1922 prior to the Austral Cinema being built on Wilpena Terrace.
 (2016)



ARTIST Hilda Zuvela
 LOCATION 58 Wilpena Tce Kilkenny
 ABOUT Swiss style love heart pole
 The love hearts are 'Licitar' hearts. The making of the hearts represent our Croatian culture. They are made in Croatia & have been recognized as an intangible cultural practice by UNESCO. They have become a symbol of Croatia & are only found there.
 (2015)



ARTIST Hilda Zuvela
 LOCATION 51 Wilpena Tce Kilkenny
 ABOUT Peacock Pole
 The peacock is only because I love peacocks there is no other meaning.
 (2015)



ARTIST Gabriele De Loreto
 LOCATION 47 Wilpena Tce Kilkenny
 ABOUT The Palm Tree is an escapist theme for Gabriele and represents her dreams about holidays on warm sandy tropical beaches. It was Gabriele's first pole, with the sand around the bottom being painted by her children. The pole has been varnished to stop it from fading.
 (2015)



ARTIST Gabrielle De Loreto & Kate
 LOCATION 52 Wilpena Tce Kilkenny
 ABOUT Runny Cat was a temporary picture that was painted on a day when it rained, which made the picture drizzle.
 It has not been fixed yet, current resident Kate intends to do something in the future.
 (2016)



ARTIST Gabrielle De Loreto
 LOCATION Wilpena Terrace Kilkenny
 ABOUT Tiger Pole
 The Tiger pole by Gabrielle is a much adored piece of work. One of the earliest poles in the street it has been featured in a messenger story.
 The pole shows a snow tiger on one side and a tropical setting with a tiger hiding in the bamboo on the other.
 (2015&2017)



ARTIST Tracey Davis
 LOCATION 48 Wilpena Tce Kilkenny
 ABOUT Stripes of Colour
 To be a horse for the local residents.
 (2016)



ARTIST
LOCATION
ABOUT

Tracey Davis
39 Wilpena Tce
Kilkenny Cats
The oval adjacent to this pole was home to the Kilkenny Football club or Kilkenny Cats in the 1930's. The Kilkenny Cats were earlier know as the Carlton Cats before the districts name was altered.
The cartoonish character of the cat was copied from Gino Chinca's blazer which he proudly wore while playing for Kilkenny. It is similar to Tom from Tom and Jerry.
(2017)



ARTIST
LOCATION
ABOUT

Gabrielle De Loreto
37 Wilpena Tce
Soccer Pole
Painted on request for the resident by his mother the pole details his favourite European soccer team. Gabrielle has chosen 2 different designs; one is a row of footballs and the other a soccer player kicking a ball.
There is also a crow and a turtle at the base.
(2016)



ARTIST
LOCATION
ABOUT

Tracey Davis
35 Wilpena Tce Kilkenny
This pole is currently being turned into a strong man pole with circus stripes.
When the block adjacent to this pole was an oval it was used by a variety of groups for fire works, circuses would set up a tent here as did the local Salvation Army. Fire works were set off here for Guy Fawks Days and the Kilkenny Cats once trained on the oval.
(2017)



ARTIST

Tracey Davis

LOCATION

34 Wilpena Tce Kilkenny

ABOUT

Peace Dove

This pole was painted because I was sick of watching all the negative stories on the ABC 24 hour news channel. Specifically in relationship to terrorism.

Society can sometimes spend way too much time focusing on sad stories and I wanted to feel peace and harmony in the world outside my door.

(2016)



ARTIST

Jan Kennedy

LOCATION

28 Wilpena Tce

ABOUT

Hand of Fatima

The "Hand of Fatima" is an ancient Middle Eastern and North African amulet symbolising the Hand of God, in all faiths it is a protective sign intended to ward off the Evil Eye and bring happiness, luck, health and good fortune. Jan teamed it with blue mosaic tiles, and a yellow background to represent the Sahara desert.

(2016)



ARTIST

Tracey Davis

LOCATION

22 Wilpena Tce Kilkenny

ABOUT

1 pole, 2 images.

Crows and Port Power colours in a pattern for the resident.

One side is painted with gold and red triangles on a navy background to signify the Adelaide Crows for the local resident.

On the second side they requested Port Adelaide colours and I used teal and white triangles on a black background.

(2016&2017)



ARTIST James Schuler
 LOCATION 22 Wilpena Tce Kilkenny
 ABOUT A warning for walkers and cyclist about the blind corner in bright yellow. James is an architect, artist and teacher and this pole was created to promote safety in the area. The specially created font on this pole was made by James and his neighbour Nic by driving around the area taking photos of the old style lettering found on the posts. These images were then assembled in Photoshop and turned into a stencil. A commendable process of preserving history. (2016)



ARTIST Nic Folland
 LOCATION 27 Wilpena Tce Kilkenny
 ABOUT 1st side Flood pole
 2nd side height pole
(detailing the heights of residents)
 Nic Folland is a local artist and sculpture teacher at the Central School of Art. Nic currently has work in the national gallery he has also exhibited in the State Gallery of SA. (2016)



ARTIST Jan Kennedy
 LOCATION 16 Wilpena Tce Kilkenny
 ABOUT Koi dreaming
 The koi fish was the resident Simon Peter's suggestion. The design ties in with the wave lead-light over his front window. Jan added the yin yang symbol to represent balance in life, and the cats to attest to our love of cute felines. *(Jan and neighbour Simon's love for their cats)* (2016)



ARTIST

Kelly Dann

LOCATION

23 Wilpena Tce, Kilkenny

ABOUT

Poppies

"The poppy pole was because I love the rosiness of poppies and their unusual shapes; they seemed to add a pop of colour to the street scape and were fun to paint."

This pole was one of the first to be painted on Wilpena Terrace.

(2011/2012)



ARTIST

Tracey Davis

LOCATION

12 Wilpena Tce Kilkenny

ABOUT

The Darlek a fan art piece.

Requested by the Mills family I this Darlek has been drawn and painted from 3 fan art pieces found on the Internet.

Please note there is no profit making element to any fan art created in the area.

(2017)



ARTIST

Tracey Davis

LOCATION

15 Wilpena Tce Kilkenny

ABOUT

This is currently being temporarily filled in with an I Love you picture. One one side a have used a visual I love you, with words on the other.

(2017)



ARTIST Paisley and Violet Reichstein with assistance from an indigenous neighbour

LOCATION 9 Wilpena Tce Kilkenny

ABOUT The girls started this painting showing the sunrise over the ocean. Their indigenous neighbour living at no 9 came out and helped them with both their dot style of painting and the animal footprints you can see in the sand.
(2017)



ARTIST Kelly Dann & Jackie Reichstein

LOCATION 8 Wilpena Terrace Kilkenny

ABOUT Side 1: Rosella Soup Cans.
Side 2: Alice Guymer
The Warhol inspired Tomato Soup can was completed by Kelly Dann. "The soup pole was something I thought reflected the shop fronts around the area, with the combination of the Warhol Pop Art soup cans but with the South Australian Rosella branding."
The history pole is a medieval depiction by Jackie Reichstein. It is a fully resolved design with elegance and medieval glamour. This piece is much loved by local residents.
(2016)



ARTIST James Schuler

LOCATION 4 Wilpena Tce Kilkenny

ABOUT Blue Wilpena Terrace test pole for Jame's Yellow street pole.
The specially created font on this pole was created by James and his neighbour Nic driving around the area taking photos of the old style lettering found on the posts. These images were then assembled in Photoshop and turned into a stencil. A commendable process of preserving history.
(2016)



ARTIST Jackie Reichstein
 Paisley, Violet, April and Dylan

LOCATION 3 Wilpena Tce, Kilkenny

ABOUT 1 pole, 2 images.
 This is a double sided pole which details gorgeous cheery flowers by the local kids Jackie's girls Paisley & Violet, as well as Amy Foote's kids Dylan and April.
 On the other side Gothic Gnomes are sitting happily under a full moon while a spider dances in the moonlight. A wonderful whimsical picture by local artist Jackie Reichstein.
 (2017)



ARTIST Tracey Davis

LOCATION 2 Wilpena Tce, Kilkenny

ABOUT Bianco's Factory site pole is based on the Bianco's building. Some artistic license has been taken, with buildings altered or left out, but the pole is basically a painting of the view of Bianco's just beyond the pole.
 (2015)



ARTIST Amy, Dylan and April Foote

LOCATION 1 Wilpena Tce, Kilkenny

ABOUT Side 1, blue rose Side 2, a Phoenix type bird
 The blue rose is a tribute to my grandmother Rosemary Cornish who has been my best friend for the past 10 years until she passed away last year. She was a remarkable women and her unique strength and compassion, something I never imagined I'd find in this world.
 The Phoenix bird is the side facing the front of the street as it is to represent my front, the face and front I give to the world.
 I choose the Phoenix bird to represent the many times I personally have set my personal front to the world on fire and risen again from the ashes. It will incorporate the blues and green that I love so much and within the tail will be small hidden representations of the many facets and passion that make up me.



ARTIST Brenton Culshaw
LOCATION Wilpena Tce Kilkenny
ABOUT Austral Silent Cinema,
The pole is a tribute to the old silent cinema that once stood on the Bianco's site. Imagery includes silent cinema giant Charlie Chaplin, old fashioned lights and a roll of film.
(2015)



ARTIST Tracey Davis
LOCATION Wilpena Tce Kilkenny
ABOUT The Flower Pods
This is a temporary pole painted to reflect flower pods blowing in the breeze. It will at some stage be replaced by a history or fan art pole.
(2017)



YALLUM TERRACE

Total Poles: 25

Total Painted: 5

Artists involved: 6

Resident participation: 8

ARTIST

Stuart Messenger

LOCATION

37 Yallum Terrace, Kilkenny

ABOUT

Long term resident Stuart Messenger loves the Port Adelaide Football team and after some discussions about how to best portray them on his pole he choose Magpies for his illustration.

These lovely naive birds sit ready for action like Stuart's beloved footy players. Stuart has put a lovely floral garden underneath the magpies.

(2017)



ARTIST

Morelia Reyes Castro and Gabriela Reyes

LOCATION

32 Yallum Terrace, Kilkenny

ABOUT

Knitted flowers have been hung on the front of Morelia and Gabriela's home in Yallum Street. These flowers were first made for the Mind the Gap project in 2016. They first hung on Croydon Train Station before being washed and returned to Morelia.

(2017)



ARTIST Rhiannon Lucas
 LOCATION 33 Yallum Terrace, Kilkenny
 ABOUT Rhiannon painted this pole for her mum, it is based on the families love of animals both cats and dogs.
 This pole was an amazing art journey to watch and I visited it many times to see the constantly evolving patterns and colourful designs applied by Rhiannon.
 She plans to paint another pole or two in Yallum St in the future.
 (2017)



ARTIST Sean & Barb Healy
 LOCATION 20 Yallum Terrace, Kilkenny
 ABOUT Barb wanted to do something on her front pole and after seeing a nice bouquet of flowers she painted them onto her pole.
 Barb hopes to alter her pole with a parrot in the future.
 (2016)



ARTIST Tracey Davis for Stavros & his father
 LOCATION 17 Yallum Terrace, Kilkenny
 ABOUT 1 pole, 2 images.
 Piano keys and a giant magpie display two of Stavro's loves on the one pole.
 The first is the Port Adelaide Football Club while the second is his love of music.
 Stavros used to work as a musician until illness forced him to stop.
 (2016)



ARTIST

Gino & Jean's daughter Kerryll &
granddaughter Nicola

LOCATION

13B Yallum Terrace, Kilkenny

ABOUT

Over 30 years local historian Gino Chinca has collected photos, newspaper clippings and historical information on our small suburb and its surrounding areas. At home, Gino has massive folders overflowing with information, which includes that which is both mundane and engaging. Gino's cultural value due to this amassed knowledge is significant.

This pole is a reflection on his love of history as well as his great contribution to the area.

(2017)



WOODVILLE PARK

BELMORE TERRACE

Total Poles Painted: 21

Artists involved: 23

Resident participation: 22

IN 2016 KELLY MCGORM SET ABOUT ALTERING HER NEIGHBOURHOOD. KELLY WAS ASSISTED BY THE CITY OF CHARLES STURT WITH A DWA GRANT UNDER THE NAME OF WOODVILLE ON TRACK (WOT) AND THE REST IS HISTORY WITH LOCAL RESIDENTS AND ARTISTS CHIPPING IN TO CREATING ART IN THE AREA.

ARTIST

Deanna & Coen Howland

LOCATION

60 Belmore Terrace, Woodville Park

ABOUT

Along the way we have passed a Rhino pole created by Deanna and Coen Howland. It features a Lion, Rhino and lizard. The pole was painted with spray paint first and outlined with a brush to quickly create this fun design by an aunty and her nephew. The best bit about their work was that Coen painted the top of the pole while sitting in his aunties shoulders. (2017)



ARTIST

Angela Kingston

LOCATION

44 Belmore Terrace, Woodville Park

ABOUT

Artist Angela Kingston has painted the New Hollande Honey eaters. For me this is one of my favourite poles in the street. I know Angela spent some time finishing this design. The work is delicate with fine attention to detail. (2016)



ARTIST Tracey Davis
 LOCATION 42 Belmore Terrace, Woodville Park
 ABOUT A rose pole with giant red roses oozing off the canvas. The residents requested the design which was completed by Tracey Davis.
 Tracey's style is quite painterly.
 (2016)



ARTIST Kelly McGorm
 LOCATION 33 Belmore Terrace, Woodville Park
 ABOUT On Belmore Terrace sits a sign with a black and white magpie sitting on top it, this was completed freehand by Kelly McGorm. She drew it by looking at her phone.
 (2016)



ARTIST Vanessa Rosen
 LOCATION 34 Belmore Terrace, Woodville Park
 ABOUT The Henna pole you can now see was a labour of love and the first pole painted by Vanessa Rosen. Vanessa is a henna artist who became involved in the project after meeting artists on Woodville Park station. Her fine details can be seen in the dot work and thin lines.
 (2016)



ARTIST Kelly McGorm
 LOCATION 30 Belmore Terrace, Woodville Park
 ABOUT These Koi fish were completed freehand by Kelly McGorm. She drew it by looking at her phone. (2016)



ARTIST Jackie Reichstein
 LOCATION 26 Belmore Terrace, Woodville Park
 ABOUT Jackie painted the Ladies Cabaret, with a different face on each side of this pole as part of the Woodville on Wot painting sessions. Jackie has painted a few poles in Kilkenny and in McInerney Reserve, as well as having put up her paste-ups in Pinda St. Jackie is an Art Teacher at Henley Beach High School. The ladies on each side of this pole are in the colour tones of red, black and white. (2016)



ARTIST Tayla Carlaw
 LOCATION 22 Belmore Terrace, Woodville Park
 ABOUT Art Deco inspired pole by Tayla Carlaw. (2016)



ARTIST Tracey Davis
 LOCATION 22 Belmore Terrace, Woodville Park
 ABOUT At the entrance to the Woodville Park Train Station sits another art deco lady by Tracey Davis.
 Kelly provided an example of the lady wearing the hat for Tracey to create the woman on the pole. Some residents have commented that it looks bit like Marguerite Willis from Cafe Latino.
 (2016)



ARTIST Rina Russo
 Kelly / Niamh McGorm
 LOCATION 21 Belmore Terrace, Woodville Park
 ABOUT On one side of the pole is orange Deco style which was hand drawn by Kelly McGorm.
 (2016)



ARTIST Kelly, Nimah and Maeve McGorm
 LOCATION 21 Belmore Terrace, Woodville Park
 ABOUT Niamh and Kelly painted the Art Deco Rose, at the bottom of the Rose they have placed grass and leaves to cover up unwanted tagging. While on the back of this pole is a string of yellow daisies by Maeve and Kelly.
 (2016)



ARTIST Tracey Davis

LOCATION 20 Belmore Terrace, Woodville Park

ABOUT Niamh McGorm requested an orange cat which Tracey painted for her on one side. It is based on Tracey's cat Ambi. On the flip side is a man in a suit holding a cane whilst balloon dangle over head in the sky above him. This drawing was inspired by a design Kelly McGorm had given Tracey. (2016)



ARTIST Parish Family

LOCATION 11 Belmore Terrace, Woodville Park

ABOUT The Parish family created this pole. It is a representation of Disney's A Little Mermaid. They plan to paint a lion on the other side. (2016)



ARTIST Kelly McGorm

LOCATION 8 Belmore Terrace, Woodville Park

ABOUT A giant Bird of Paradise was created by Kelly McGorm for the resident. The other side will have a natural picture by Tracey Davis. (2017)



ARTIST Antoinette Salandra
LOCATION 6 Belmore Terrace, Woodville Park
ABOUT This pole has two designs on one pole by Antoinette Salandra and her two children in Adelaide Crows colours. One side is a diagonal pole created with masking tape. On the flip side is a line of flowers. (2016)



ARTIST Tracey Davis
LOCATION 4 Belmore Terrace, Woodville Park
ABOUT Local residents requested a historical pole on one side and a gecko on the other. The historical pole is a depiction of an EH Holden to represent the Holden's car factory that once stood on the corner of Cheltenham Parade and Port Road. The Gecko has some fun patterns below it on the sandy coloured background. (2016&2017)



WOODVILLE PARK

PARK STREET NORTH

Total Poles Painted: 5

Artists involved: 6

PARK STREET IS HOME TO TWO EMPTY HOUSES WHICH IS WHAT INSPIRED KELLY TO APPLY FOR A DWA GRANT FOR HER AREA. THESE DAYS THE PAINTED POLES HAVE CHEERED UP PARK STREET.

ARTIST Rina & Amira Russo

LOCATION (Across from 41) Park St North, Woodville Park

ABOUT Across the road from Cafe Latino you can see a pole by Rina Russo and her daughter Amira, which is about music. On one side you can see piano keys and a guitar, while on the other side a ballerina dances. (2016)



ARTIST Violet & Paisley Reichstein
Maeve & Niamh McGorm

LOCATION (Across from 42) Park St North, Woodville Park

ABOUT This gorgeous pole was painted by Violet and Maeve on one side, then by Paisley and Niamh on the other. One side shows 3 lady bugs while the other contains happy flowers on a purple background. (2016)



ARTIST Ivana Kotasek
LOCATION (Across from 27) Park St North,
Woodville Park
ABOUT A landscape filled with houses from
Woodville Park by Ivana is represented
on one side of this pole.
(2016)



ARTIST Tracey Davis
LOCATION Cnr Park St North and Stanley Street,
Woodville Park
ABOUT A balloon floats in the sky. One side shows
an up close view of the balloon while on
the other side a man dangles from a rope.
(2016)



MURAL ART

AROONA ROAD

Title: Honey Eaters

Artist: Fiona Gibson Hobbs

Location: 61 Aroona Road, Kilkenny

This picture of 3 honey eaters was created by Fiona Gibson Hobbs from Queensland. Her Uncle Iain lived for many years in the home at Aroona Road with his partner Andrew and Sue. The image of the honey eaters reflects the harmony the three lived in at the home. Iain died in 2016 and the painting is a tribute to him. Fiona is an upper primary teacher in Brisbane who completed art as a major in high school. Fiona has been part of community art works in Brisbane.

"The New Holland Honey eaters are frequent visitors to the bottle brushes in the garden and were very special to Iain, my uncle, who passed away last year. It was painted with Dulux exterior water based house paint entirely with brushes. I started with the primary colours as well as black and green, and mixed all the colours from these.

For the design, I digitally made a composite image of the birds and bottle brush background and I used a filter to help bring out the shapes. I painted directly onto the wall, without any projection.

I travelled down from Brisbane for the QLD Easter holidays to paint the mural. I am a primary school teacher. Andrew and Sue kept me very well looked after for the process, which was at times very emotional as we reminisced about Iain's life. I cherish the time I was able to spend with Andrew and Sue. I learned so much about Iain throughout my stay. My mother, Iain's big sister, Heather, was a great support. Andrew, Sue and Heather all painted part of the mural. It was special to have so many locals stop to share their memories of the old shop (*some said it was a butcher and others, a haberdashery*), and to inquire about the painting." (2016)



MURAL ART & PASTE UPS

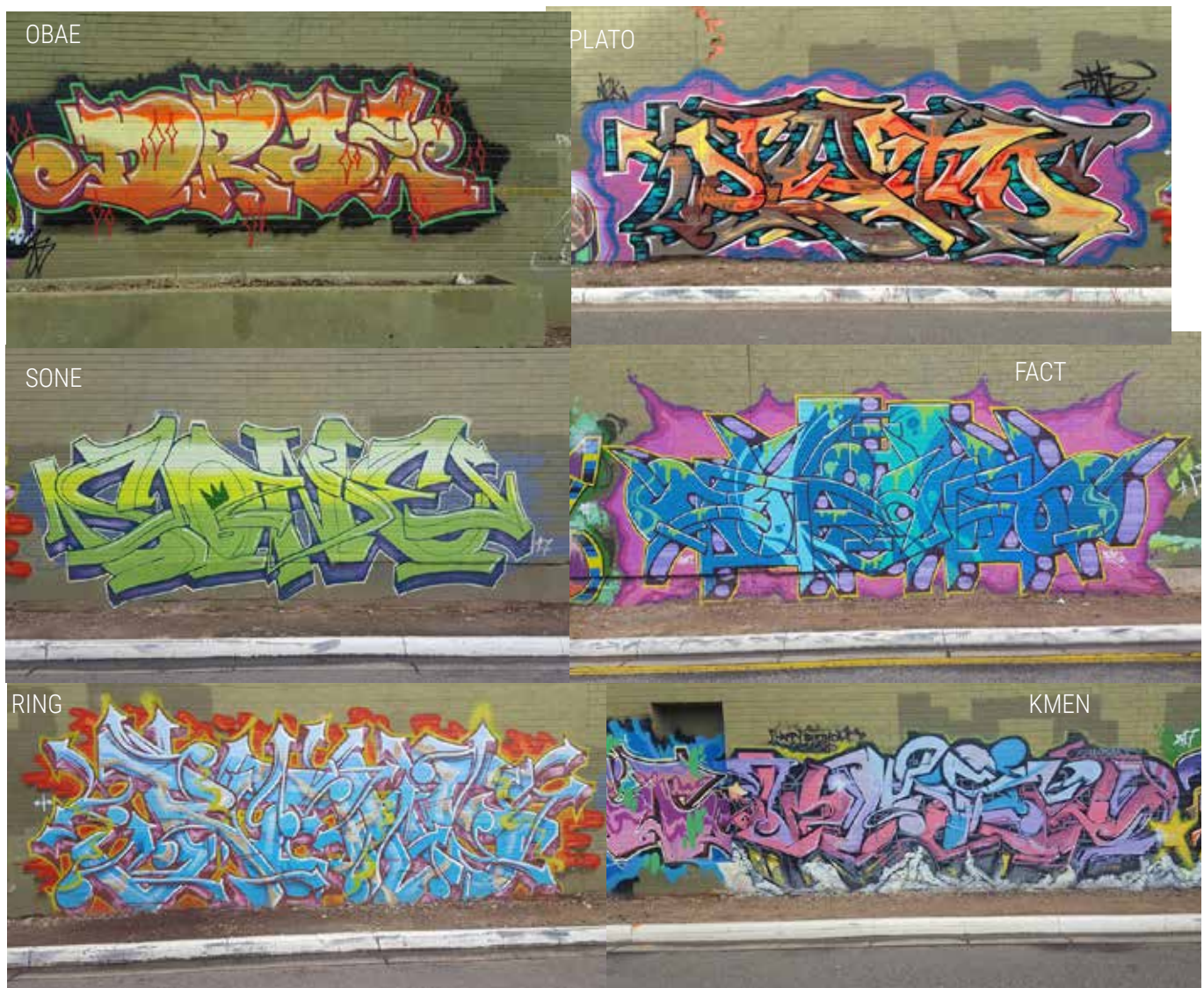
PINDA STREET

Title:	Mixed pieces	Crew:	MNCNEK, meaning never ending chaos.
Location:	Pinda St, Kilkenny	Medium:	Aerosol & Paste Up

New work in Pinda Street includes a range of graffiti pieces by around 20-25 street artists. They have been installed in the street over June and July of this year. The group of artists who have come to paint here has included a well-known graffer from Adelaide called Tense. He has been painting graffiti for 20-30 years. A number of the other artists involved this time had painted on this wall 15 or so years ago when it was an open art wall. A few of the artists such as Fact have repeat designs along the wall and the crew is called MNCNEK, meaning never ending chaos. A few of the tag names on the wall include Kmen, Obae, Plato, Ring, Fliker, Sone and Scan.

There are a number of pictures on some YouTube videos of the old wall (around 2000's), under Adelaide Old School Graffiti. Amongst this wall is a mural of Hannibal Lector with some asylum in-mates under a dark moon.

(2017)



FACT



FACT



SONE



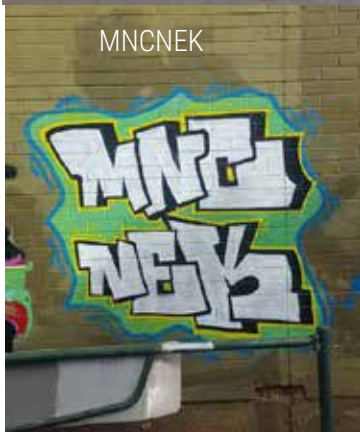
SCAN



SCAN

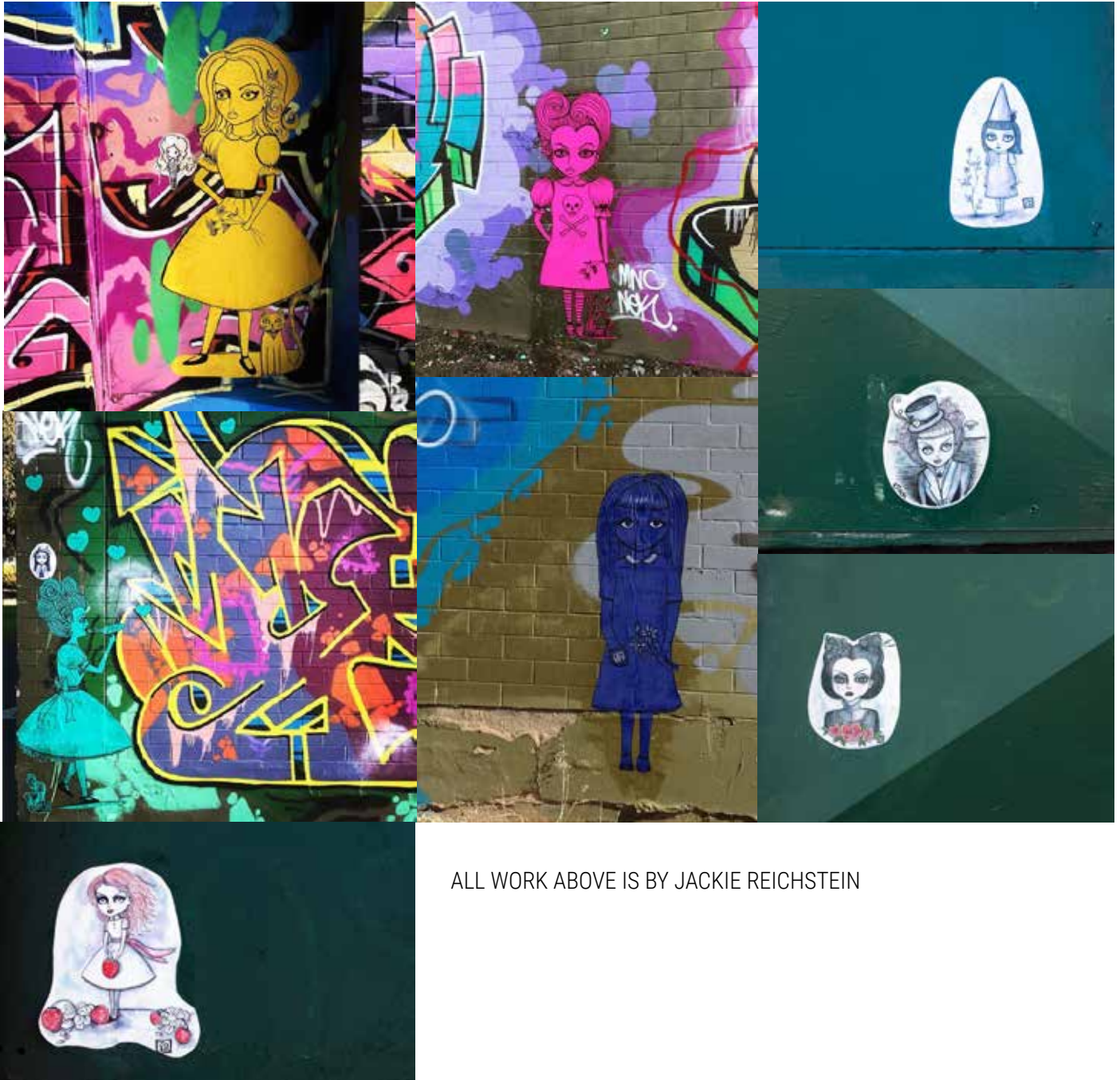


MNCNEK



Also featured along this wall are some BIG GIRLS paste-ups by Jackie Reichstein. "Big girls are a feminization of the streets. Deliberately girly and whimsical yet strong and sassy. Using the colours of the strong graffiti they are pasted next to, they are an attempt to unify text with images."

(2017)



ALL WORK ABOVE IS BY JACKIE REICHSTEIN

MURAL ART

McINERNEY RESERVE

Title: Mixed pieces

Artists: Various

Location: McInerney Reserve, Kilkenny

A team of graffiti artists first decorated the back wall of Bianco's in 2016 lead by local community arts coordinator and artist Steve Glass, it features work by iDare and Ogs who have both signed their name. The work in the middle depicts some spray can's kicking a footy in the park with one of the spray cans having an exposed cheeky buttock. (2016)

Above the pieces are some butterflies created by Morelia Reyes Castro and Gabriela Reyes. These butterflies were made with old City of Charles Sturt Banners. (2016)

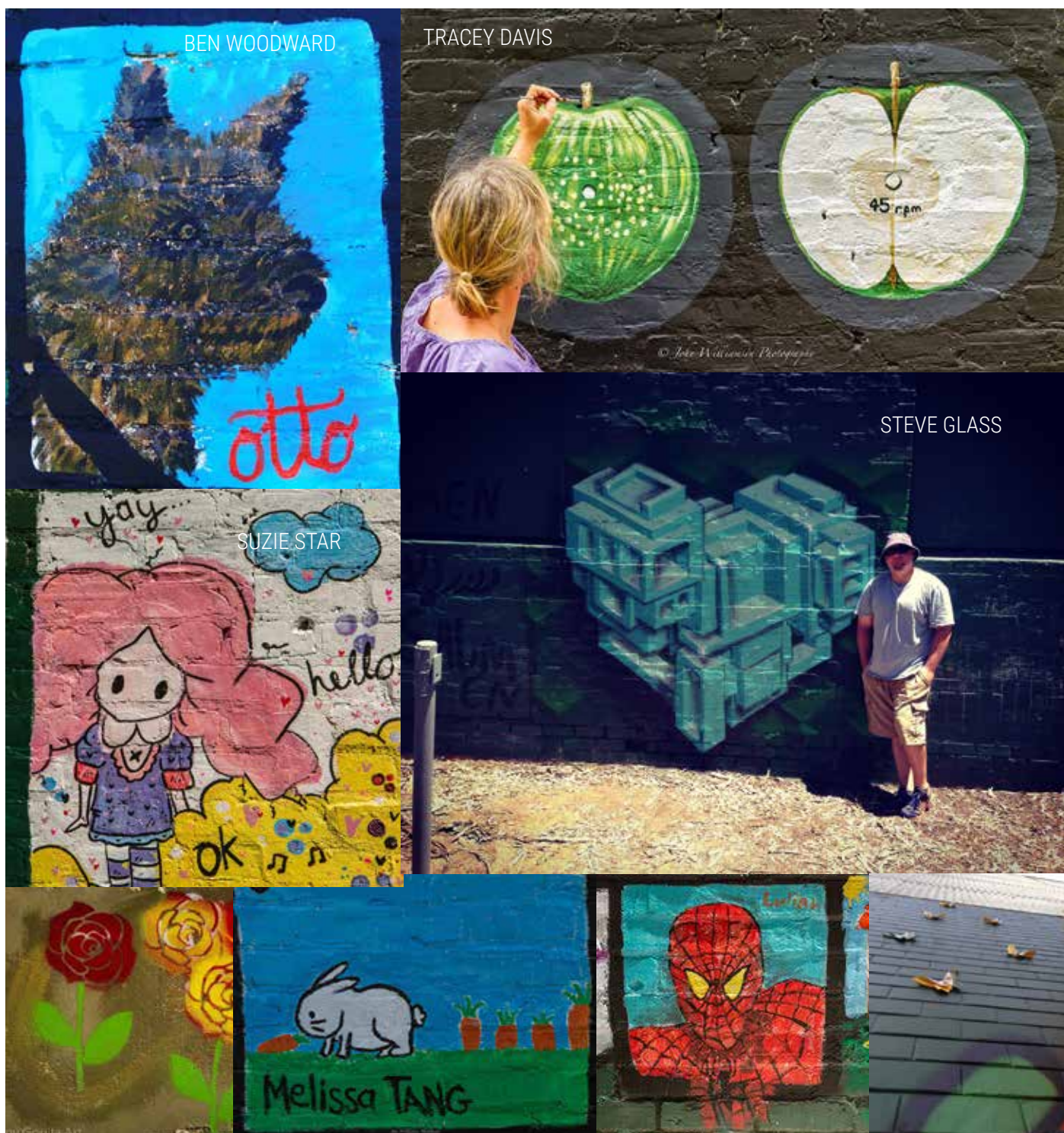
(2016)



At Christmas of 2016 the community decided to create an outdoor open-air art gallery which was based on the work created in the Croydon Underpass. Some other locals were having similar thoughts (James and Giulio) as taggers were hitting the wall on a regular basis. Please note there is a vast difference between taggers, graffiti artists and street artists.

The art seen on the Community wall includes work created by professional and emerging artists namely; Steve Glass (the love heart), Giulio Ponte the #kilkennywings design teacher Gabby Danielle (Picasso inspired lady and Russian doll), art teacher Jackie Reichstein (unicorn and girl), cartoon artist Suzie Star (hello pink hair girl) and her daughter Suki (rainbow S), Tracey Davis (Beatles apple, cherry blossoms), Abstract by Paul H, Suzie Stiles (dog music), local kids for some of the love hearts, Jackie Reichstein's Kelly McGorm and Suzie Star's girls for a variety of kids pictures, Ben Woodward (Otto the dog), Quang (the Pineapple), Cheryl with the Sunflower (Glenda Lee's sister), George Duras' grandchildren and some other families that were at the park. (2016)

Fact and another graffiti artist painted the Handball wall. (2017)





POPPY



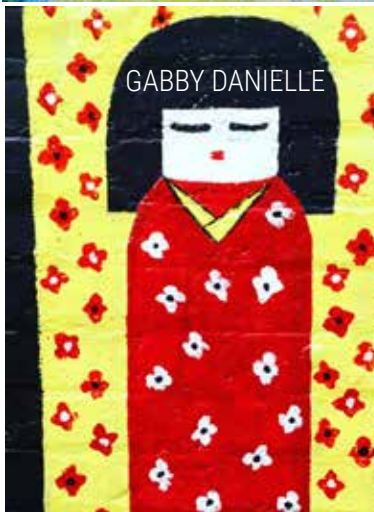
SUKI



PAUL H



GABBY DANIELLE



GABBY DANIELLE



MAX



TRACEY DAVIS



GIULIO PONTE



STEVE GLASS



QUANG NGUYEN



SUZIE STILES



MURAL ART THE TARDIS

Artists: June Miller & Jane Baird

Location: Kilkenny Train Station, Kilkenny



In 2015 Jane Baird and June Miller came up with the idea of turning the signal box on Kilkenny Train Station into a Tardis. The idea took off and before Railcare knew it, people were down at the station keenly painting the signal box blue, since then a light was added to the top to give the box a solar night light while authentic stickers have been added to the box.

Over recent months the Tardis has suffered from tagging on the station but thanks to Railcare the box has now been graffiti proofed and is quite easy to clean off. The Tardis of Kilkenny has become quite an icon for the area. (2015/2016)

MURAL ART CAFE LATINO

Title: Cafe Latino

Artists: Adam Poole-Mottishaw and Tayla Carlaw

Location: Cafe Latino Belmore Terrace Woodville park

Artist Adam states "The Cafe Latino Mural was inspired by the style of the cafe itself and has been painted in an Art Deco style, which captures the feel of the cafe and relates to music and life." Tayla Carlaw and Adam Poole-Mottishaw painted it in 2015/2016.

Cafe Latino was the recipient of the Main Street Award in 2016.



CAFE LATINO AT WOODVILLE
PARK

MURAL ART

WOODVILLE PARK STATION

Title: Cafe Latino

Artists: Adam Poole-Mottishaw and Tayla Carlaw

Location: Belmore Terrace Woodville Park

You can't miss the amazing design work on the Woodville Park Train Station platform. Aerosol artist & owner of Cold Krush Store/Gallery Adam, who has been involved in the Adelaide graffiti movement since 1987 and now focuses on mural work, created this art deco train station design for Rail care in 2016.

In Adam's words "This piece was designed for DPTI following discussions between traders from Café Latino and neighbouring shops.

My objective was for the platform piece to compliment the Café Latino Mural while also reflecting the railway environment. Based on the Art Deco style, my work generally leans towards abstract as the process unfolds, although, I'm aware the work needs to be cohesive and balanced for the community to enjoy the finished product."

A train for children with accompanying flower pots for herbs and flowers have also been included by artist Monica employed by the City of Charles Sturt. Cafe Latino received a grant to decorate the outside of the cafe through the Placemakers Business Grants in 2015/2016.



WOODVILLE PARK STATION



ARTIST MONICA



FENCE ART

Title: Crochet Flower Garden

Artists: Various knitters

Location: 75 Wilpena Terrace & Kilkenny Train Station, Kilkenny



ELSJA CORNISH IN KILKENNY



BUTTERFLIES AT KILKENNY

FLOWERS

Here you can see some knitted flowers in the form of fence art by Elsje. There are a range of crocheted characters and flowers on her fence.

A number of the flowers and creatures were created by Elsje. The rest were made by local residents from Croydon, West Croydon, Woodville Park, Semaphore Park and Kilkenny in a City of Charles Sturt Placemaking project called Mind the Gap which decorated train stations in 2016.

BUTTERFLIES

Jane Sage plus Gino and Jean China have attached butterflies, made from recycled vinyl banners, to the station fence at Kilkenny Train Station. Morelia Reyes Castro and Gabriele Reyes made the butterflies used in McInerney Reserve and at the Kilkenny Train Station in 2016 as part of the Mind the Gap project. (2016)



Tour Steps

1.	Red Riding Hood The Wolf	Tracey Davis Diana Waters	Leonardo Mantilla Leo Mantilla Emily Mantilla Downes	9.	Monkey Sophisticated Lady Arc Angel	9.	Graffiti Wall Animal Prints Paste Ups	Mixed Artists Tracey Davis Jackie Reichstein
2.	Henna Pole The Birds Crochet Garden Camel Beatles Shearers & Gask Flags	Nelson Manonella Nelson & Annette Elsje Tracey Davis Brenton Culshaw Tracey Davis June Miller	Gabrielle De Loreto Gabrielle De Loreto Gabrielle De Loreto	10.	Egyptian Palm Tree Tiger	10.	Wings Unicorn Hello Pink Otto	Giulio Ponte Jackie Reichstein Suzie Star Ben Woodward Gabby Danielle Gabby Danielle Tracey Davis Steve Glass Quang Nguyen Suzie Stiles
3.	Moroccan Design Phantom Sunflowers	Lisa & Rene Horsell Tracey Davis Tracey Davis	Gabby Danielle Gabby Danielle Coen & Finley Howland Kieron Howland	11.	House Gerbra's Kids Heaven & Hell Old Man	11.	Russian Doll Picasso Beatles Apples Heart Pineapple Dog Music	
4.	Honey Eaters Mural	Fiona Gibson Hobbs	Tracey Davis Tracey Davis Gabrielle De Loreto	12.	Strongman Kilkenny Cats Soccer	12.	Tardis Butterflies	June Miller & Jane Baird Morella & Gabriela Reyes
5.	Bowie Stama Family Shearer St	Tracey Davis Tracey Davis Peter & Joanne Thomakos	Nic Folland James Schuler Jan Kennedy Jan Kennedy Kelly Dann	13.	Flood Wilpena Sign Hand of Fatima Koi Fish The Poppies	13.	Honey Eaters Roses Rhino & Lion	Angela Kingston Tracey Davis Deanna & Coen Howland
6.	Rusty the Horse Tennis court Kite Rosella	Tracey Davis Tracey Davis Elsje & Charlotte Tracey Davis	Jackie Reichstein Tracey Davis Jackie Reichstein Paisley, Violet, Dylan & April Tracey Davis	14.	Alice Guymmer Darlek Gothic Gnomes Horizon & flowers Bianco's Factory	14.	Lady Cabaret Maggie Henna Music Art Deco Rose Orange Deco Cafe Latinos Mural Cafe pole Train Mural	Jackie Reichstein Kelly McGorm Vanessa Rosen Rina & Amira Russo Kelly & Nimah McGorm Kelly McGorm Adam & Tayla Tayla Carlaw Adam Poole-Mottishaw
7.	Heart Peacock Svia Outdoor Cinema	Hilda Zuvela Hilda Zuvela Gabrielle De Loreto	Giulio Ponte Diana Waters Giulio Ponte	15.	Bike Key/Clock Greenway			
8.	Cats & Dogs Magpies Keyboard/Magpie Historian	Rhiannon Lucas Stuart Messenger Tracey Davis Gino Chirca						



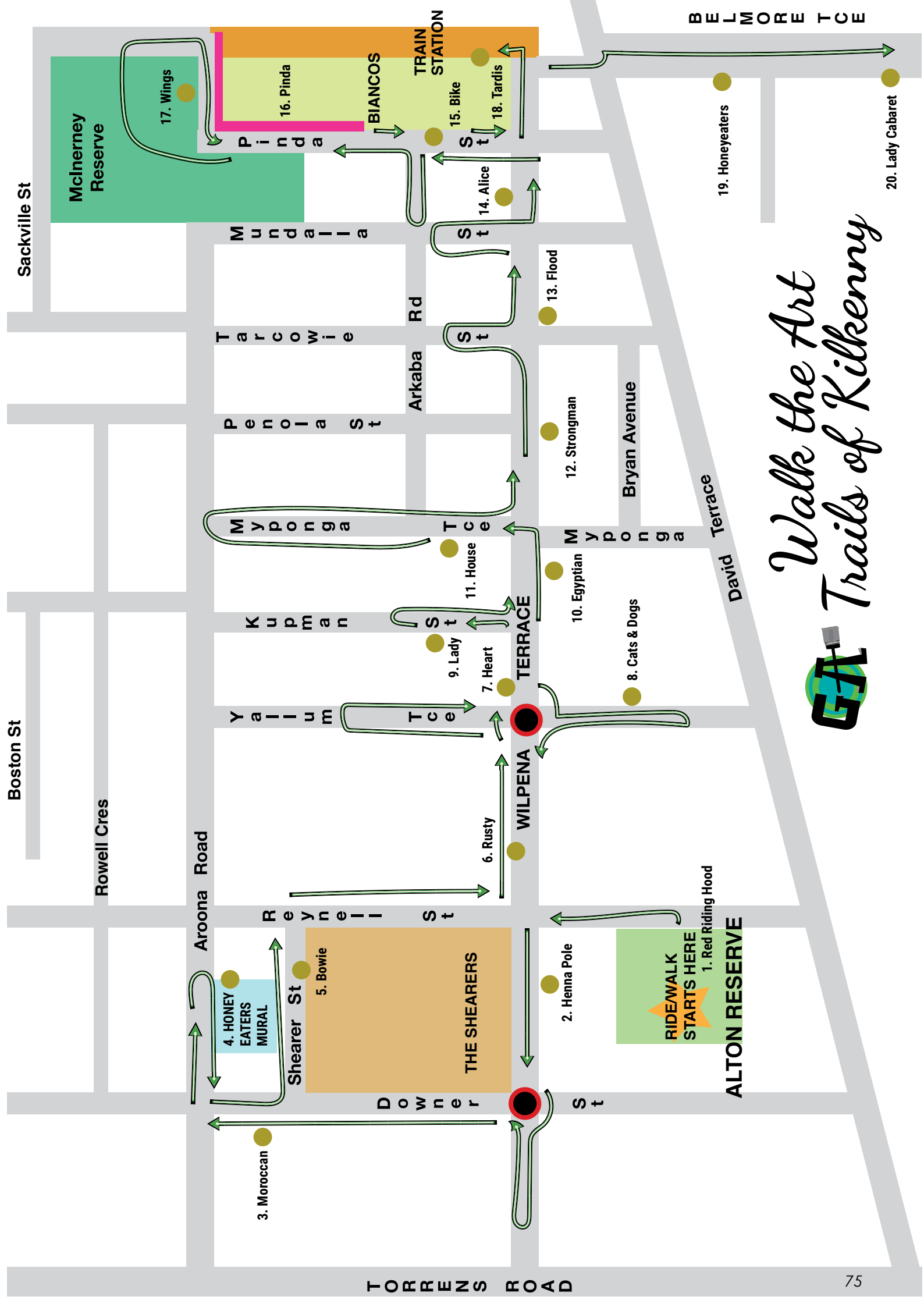
KIDS

Walking Tour

1. Red Riding Hood
The Wolf
Tracey Davis
Diana Waters
2. Henna Pole
The Birds
Crochet Garden
Camel
Beatles
Shearers & Gask
Flags
Nelson Manonella
Nelson & Annette
Elsje
Tracey Davis
Brenton Culshaw
Tracey Davis
June Miller
3. Moroccan Design
Phantom
Sunflowers
Lisa & Rene Horsell
Tracey Davis
Tracey Davis
4. Honey Eaters Mural
Fiona Gibson Hobbs
5. Bowie
Stama Family
Shearer St
Tracey Davis
Tracey Davis
Peter & Joanne Thomakos
6. Rusty the Horse
Tennis court
Kite
Rosella
Tracey Davis
Tracey Davis
Tracey Davis
Elsje & Charlotte
Tracey Davis
7. Heart
Peacock
Svia Outdoor Cinema
Hilda Zuvella
Hilda Zuvella
Gabrielle De Loreto
8. Cats & Dogs
Magpies
Keyboard/Maggie
Historian
Rhiannon Lucas
Stuart Messenger
Tracey Davis
Gino Chinca

9. Monkey
Sophisticated Lady
Arc Angel
Leonardo Mantilla
Leo Mantilla
Emily Mantilla Downes
10. Egyptian
Palm Tree
Tiger
Gabrielle De Loreto
Gabrielle De Loreto
Gabrielle De Loreto
11. House
Gerbra's
Kids Heaven & Hell
Old Man
Gabby Danielle
Gabby Danielle
Coen & Finley Howland
Kieron Howland
12. Strongman
Kilkenny Cats
Soccer
Seed
Tracey Davis
Tracey Davis
Gabrielle De Loreto
Sue Johnson
13. Flood
Wilpena Sign
Hand of Fatima
Koi Fish
The Poppies
Flags
SA Icons
Nic Folland
James Schuler
Jan Kennedy
Jan Kennedy
Kelly Dann
June Miller
June Miller
14. Alice Guymmer
Darlek
Gothic Gnomes
Horizon & flowers
Bianco's Factory
Jackie Reichstein
Tracey Davis
Jackie Reichstein
Paisley, Violet, Dylan & April
Tracey Davis
15. Bike
Key/Clock
Giulio Ponte
Diana Waters

16. Greenway
Modrian/Lace
Graffiti Wall
Animal Prints
Paste Ups
Giulio Ponte
June Miller
Mixed Artists
Tracey Davis
Jackie Reichstein
17. Wings
Unicorn
Hello Pink
Otto
Russian Doll
Picasso
Beatles Apples
Heart
Pineapple
Dog Music
Giulio Ponte
Jackie Reichstein
Suzie Star
Ben Woodward
Gabby Danielle
Gabby Danielle
Tracey Davis
Steve Glass
Quang Nguyen
Suzie Styles
18. Tardis
Butterflies
June Miller & Jane Baird
Morelia & Gabriela Reyes
19. Honey Eaters
Roses
Rhino & Lion
Angela Kingston
Tracey Davis
Deanna & Coen Howland
20. Lady Cabaret
Maggie
Henna
Music
Art Deco Rose
Orange Deco
Cafe Latinos Mural
Cafe pole
Train Mural
Jackie Reichstein
Kelly McGorm
Vanessa Rosen
Rina & Amira Russo
Kelly & Nimrah McGorm
Kelly McGorm
Adam & Tayla
Tayla Carlaw
Adam Poole-Mottishaw



Walk the Art Trails of Kilkenny



**RIDE/WALK
STARTS HERE**

1. Red Riding Hood

ALTON RESERVE

2. Henna Pole

3. Moroccan

4. HONEY
EATERS
MURAL

5. Bowie

THE SHEARERS

6. Rusty

7. Heart

9. Lady

11. House

12. Strongman

13. Flood

14. Alice

15. Bike

18. Tardis

16. Pinda

17. Wings

19. Honeyeaters

20. Lady Cabaret

**BIANCOS
TRAIN
STATION**

**McInerney
Reserve**

Kids stop list

1.	Red Riding Hood The Wolf	Tracey Davis Diana Waters	11.	Egyptian Palm Tree Tiger	Gabrielle De Loreto Gabrielle De Loreto Gabrielle De Loreto	18.	Wings Unicorn Hello Pink Otto Russian Doll Picasso Beatles Apples Heart Pineapple Dog Music	Giulio Ponte Jackie Reichstein Suzie Star Ben Woodward Gabby Danielle Gabby Danielle Tracey Davis Steve Glass Quang Nguyen Suzie Stiles
2.	Camel Crochet Garden Matilda & Jasper	Tracey Davis Elsje Tracey Davis	12.	Volcano Old Man The moon Gerbra's	Coen & Finley Howland Kieron Howland Franco Family poles Gabby Danielle	18.	Tardis Butterflies	June Miller & Jane Baird Morelia & Gabriela Reyes
3.	Budgie Flags Dragon	Tracey Davis June Miller Tracey Davis	13.	Strongman Kilkenny Cats Soccer Hand of Fatima Wipena Sign	Tracey Davis Tracey Davis Gabrielle De Loreto Jan Kennedy James Schuler	19.	Rhino & Lion Honey Eaters Roses	Deanna & Coen Howland Angela Kingston Tracey Davis
4.	Phantom	Tracey Davis	14.	Koi Fish Darlek Flags	Jan Kennedy Tracey Davis June Miller	20.	Magpie Henna Lady Cabaret Music Art Deco Rose Orange Deco Cafe Latinos Mural Cafe pole Train Mural	Kelly McGorm Vanessa Rosen Jackie Reichstein Rina & Amira Russo Kelly & Nimah McGorm Kelly McGorm Adam & Tayla Tayla Carlaw Adam Poole-Mottishaw
5.	Honey Eaters	Fiona Gibson Hobbs	15.	Gothic Gnomes Horizon & flowers Alice Guymar	Jackie Reichstein Paisley, Violet, Dylan & April Jackie Reichstein			
6.	Bowie Stama Family	Tracey Davis Tracey Davis	16.	Bike Key/Clock The Hulk Greenway Charles Sturt	Giulio Ponte Diana Waters Giulio Ponte Giulio Ponte Giulio Ponte			
7.	Rusty the Horse Cake Kite	Tracey Davis Tracey Davis Elsje & Charlotte	17.	Graffiti Wall Animal Prints Paste Ups	Mixed Artists Tracey Davis Jackie Reichstein			
8.	Rainbow Lorikeet Port Adelaide Soccer	Tracey Davis Tracey Davis Tracey Davis						
9.	Cats & Dogs Maggies	Rihannon Lucas Stuart Messenger						
10.	Monkey Garage Arc Angel	Leonardo Mantilla Bill Emily Mantilla Downes						

1. *Rhino* ●2. *Honeybird* ●3. *Roses* ●

Dale Street

4. *Henna* ●5. *Magpie* ●6. *Koi Fish* ●7. *Lady Cabaret* ●

Balloon & houses

● 10. ● 9.

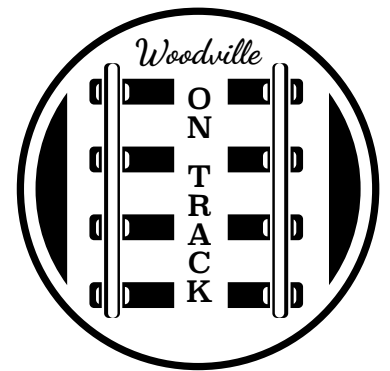
Park Street North

Cafe Latinos
mural & poles 8. ●

11. ● 12. ●

11. *Lady Bug & flowers* 13. ●12. *Music & Ballerina* 14. ●13. *Gekos and art deco*14. *Art deco rose & daisies* 15. ●15. *Cat & man*

Hughes Street North

16. *Mermaid* ●17. *Bird of Paradise* ●18. *Holden & Gecko* ●19. *Crows patterns* ●R
U
S
S
E
L
L
T
C
E
● 20. *Bees*

*Woodville
Park*

ART
WALK

T
r
a
i
n
S
t
a
t
i
o
n

Tour Steps

1.	Rhino	Deanna & Coen Howland	9.	Houses	Ivana Kotasek	18.	Holden & Gecko	Tracey Davis
2.	Honey Eater	Angela Kingston	10.	Balloon	Tracey Davis	19.	Crows patterns	Antoinette Salandra
3.	Roses	Tracey Davis	11.	Lady Bug & Flowers	Violet & Paisley Reichstein Maeve & Niamh McGorm	20.	Bees	Bec & family
4.	Henna Pattern	Vanessa Rosen	12.	Music & Ballerina	Rina & Amira Russo			
5.	Maggie	Kelly McGorm	13.	Art Deco Pattern	Maeve, Niamh & Kelly McGorm			
6.	Koi Fish	Kelly McGorm		Gecko's	Rina Russo			
7.	Lady Cabaret	Jackie Reichstein	14.	Art Deco Rose Daisies	Maeve, Niamh & Kelly McGorm			
8.	Art Deco Pole Cafe Latinos Mural	Tayla Carlaw Adam Poole Mottishaw Monica Tracey Davis	15.	Cat & Man	Tracey Davis			
	Train Planter Art Deco Lady		16.	Mermaid	Parish Family			
			17.	Bird of Paradise	Kelly McGorm			



Red Riding Hood by Tracey Davis